



So | BANGKOK
SOFITEL



INSPIRED MEETINGS

A bold statement of art and design, a vibrant city below. Sofitel So Bangkok is the city's first truly urban design hotel. A unique collaboration between an award-winning architect and five of Thailand's leading designers. The centrepiece of it all - The Tree of Life - an iconic emblem from Monsieur Christian Lacroix. A place where design meets pleasure, where technology meets comfort and where people meet people. The place to do business.

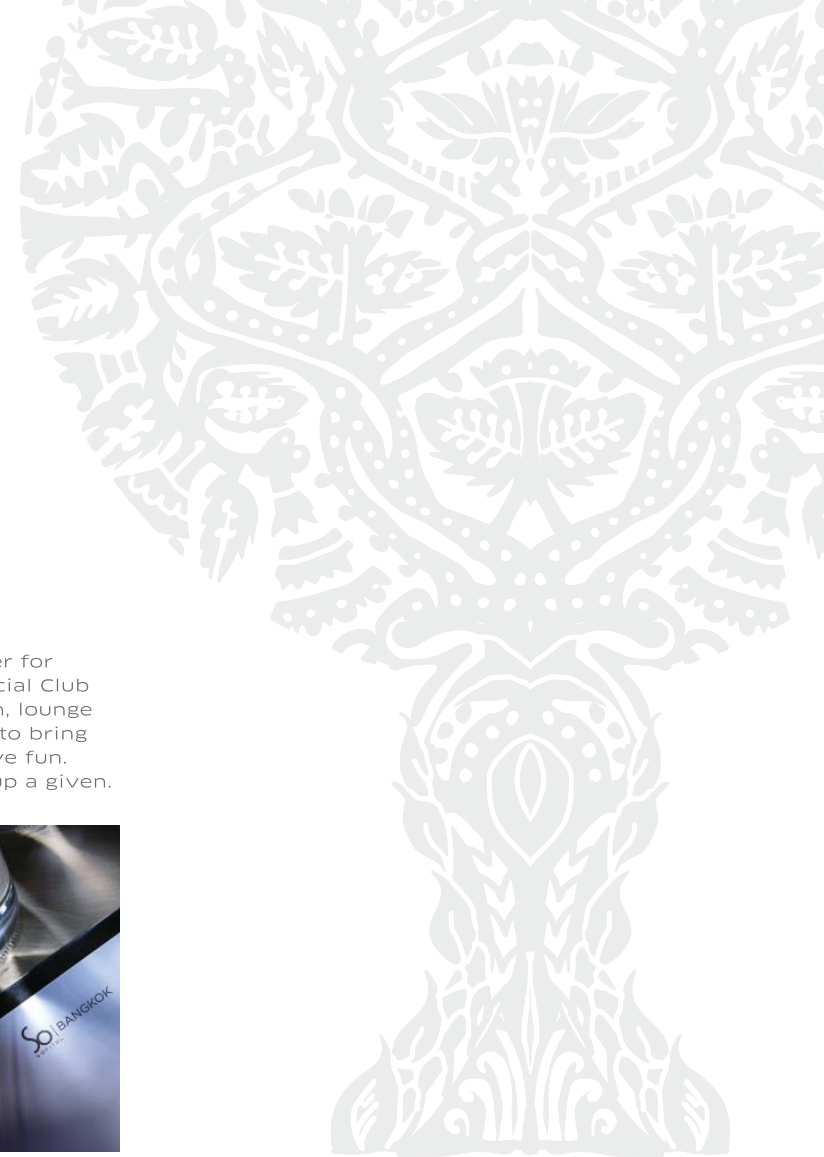
Inspiring creative spaces, private parties in The BOX, or modern glamour in the stylish Ballroom. Every event is supported by Sofitel InspiredMeetings™ - the latest technology meets excellence in service. An experienced meeting planner with a passion for design, bespoke cuisine from a dedicated chef and a meeting concierge with unparalleled insights. Every detail is tailor-made for perfection.



CREATIVITY KNOWS NO BOUNDS

SOCIAL CLUB AND SOCIAL ROOMS

Social meeting spaces with a production studio ambiance. An atelier for thinking and creativity in a loft-like setting on the 7th floor. The Social Club plays out around the pre-function area, an open space with kitchen, lounge and bar. Leading from this are four social rooms - inspiring places to bring people together, to generate ideas and concepts, to debate and have fun. The latest technologies effortlessly integrated in each, flexible setup a given.





SETTING THE STAGE

THE BALLROOM

For larger functions and grander affairs, the Ballroom offers a large pillar-less space to play with. A modern interpretation of a Parisian opera house, touches of old-school glamour are off-set by modern styling and high-tech features. Immersive presentation experiences unfold with two entire wall HD projections and built-in audio sound system, while professional standard performances are assured with optimal acoustics and professional lighting.





THE BOX

An intimate, creative space – a space to entertain and delight. With walls of glass offering panoramas of the city below, The BOX is designed to see and be seen in. A place for inspired thinking and customised events, it offers a unique venue to impress VIP guests or host exclusive gatherings.



Red Oven
World Food Market



BESPOKE CUISINE

The calming influence of water, the elegance of wood, the purity of metal, the energy of fire. Take time out from your discussions to be inspired by our demonstration chefs, or extend your break with an optional class or performance – a bartending lesson, express cooking. Themed around The Five Elements, we offer coffee breaks with a difference. The perfect ingredients for lateral thinking.

In the evening enjoy a revolution of flavours at Sofitel So Bangkok's five restaurants and bars, where the freshest ingredients meet artisan creations. A global market of fine cuisines, **Red Oven** boasts a myriad of flavours, with interactive live cooking stations. Or sample unique creations at **Park Society** rooftop restaurant and bar, where each dish is personalised, fresh à la minute. **MIXO** is a converging point overlooking the park, or sip on cocktails under the stars at **HI-SO** Moonlit Cabanas. For daytime lounging, **The Water Club** is a poolside retreat for light refreshments and cocktails, or let indulgence take hold at **Chocolab**.





AT YOUR LEISURE

Between meetings or after, take a mythological journey into a forest of relaxation and rejuvenation. So SPA – an innovative spa concept, blending the World’s best treatments with French cosmetology and high-end products.

Maximise your wellness at So FIT – a full-service fitness centre, with an iconic design and high-tech equipment. Enjoy So FIT signature fitness routines, your own personalised workout, or allow your mind to take control with a yoga class. For those who love to run, our jogging guide will help you discover Lumpini Park below.

Beyond, Bangkok beckons. Whether you crave a dose of culture or a shopping rush, our City Guru will help you navigate the bustling metropolis and its many diverse attractions.





BOLD DESIGNS WITH HIGH-TECH LUXURIES

Inspired by the elements of Water, Earth, Wood and Metal, each of the 238 rooms and suites offer four distinct styles of design. Rich textures, airy tranquillity, traditional Thai touches and bold detailing create spaces to impress, while all are equipped with the latest technology, including an Apple Mac mini solution and free WIFI, as well as complimentary in-room private bar.

For an elevated experience, **Club Signature** is an executive lounge on the 25th floor led by the creative genius of Monsieur Christian Lacroix. An eclectically decorated space, blending old Siam and nineteenth century France, it is equipped with luxury amenities, complimentary services and all day refreshments from breakfast to pre-dinner cocktails. A signature experience from check-in to check-out.

The 9th floor loft-style Solution Centre is the place for all your business needs, with dedicated personnel, iMac computers equipped with scanner and printer, and a separate room to hold impromptu meetings.

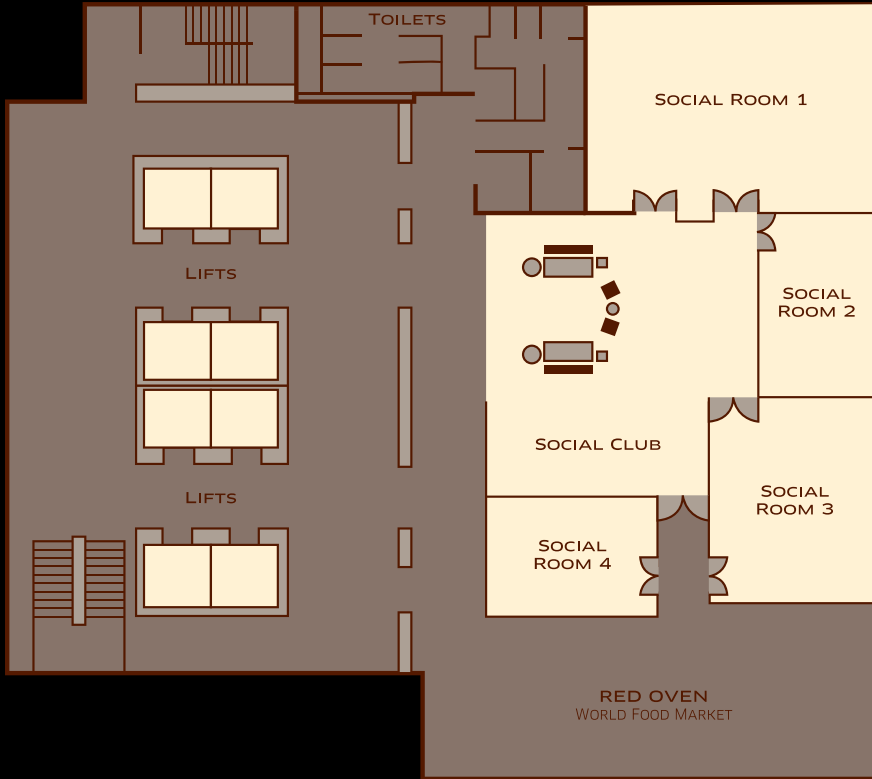


SOCIAL CLUB

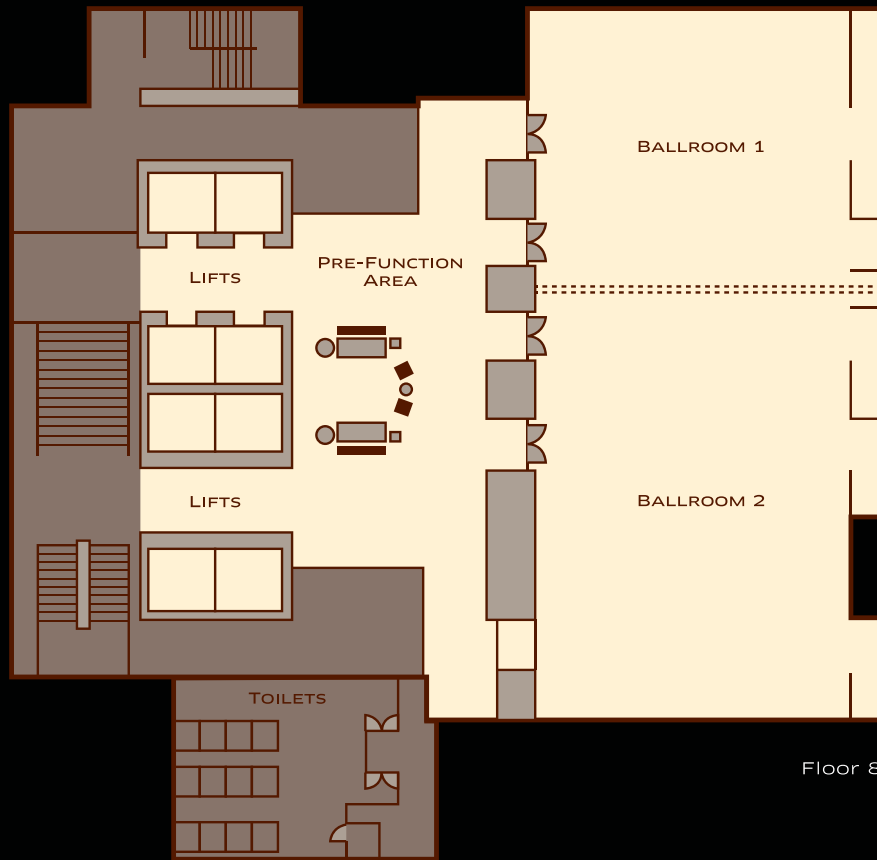
Located on the 7th floor

Social meeting spaces inspired by production house ambiance in a backstage and studio setting.

- 4 meeting rooms
- Innovative technology services
- Social club area with live cooking and creative refreshments
- Xbox 360 with Kinect
- Free WIFI
- Themed Five Elements coffee break in InspiredMeetings™ package

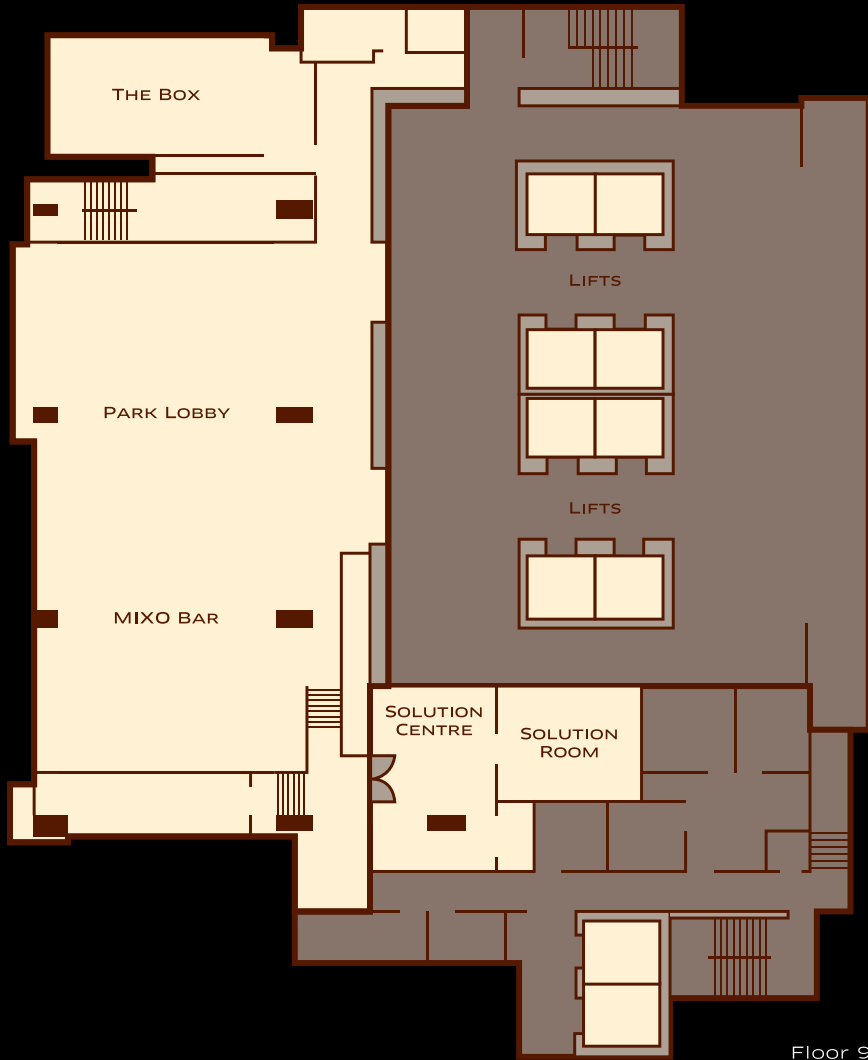


Floor 7



THE BALLROOM
 Located on the 8th floor

- 377 sqm pillar-less ballroom
- Ballroom ceiling height of 7m with open space structure for easy fixations and customisation
- Up to 400 guests
- Social pre-function area
- Free WIFI
- Entire wall HD projection 6.7m x 12.9m
- Built-in audio sound system
- Four elevators to The Ballroom



Floor 9



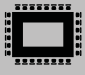
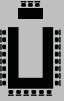


THE BOX
Located on the 9th floor

A glass box with creative space for private events and small functions

- Lumpini Park view
- Rectangular functions (45sqm)
- Perfect for small gatherings and engagement ceremonies

SOLUTION CENTRE
Located on the 9th floor

- Secretarial services
- Solution Room (24sqm) for executive meetings
- Internet corner

FUNCTION ROOM	DIMENSION				CAPACITY					
	AREA (M ²)	LENGTH (M)	WIDTH (M)	HEIGHT (M)	THEATRE 	CLASSROOM 	BOARDROOM 	U-SHAPE 	BANQUET 	COCKTAIL RECEPTION 
BALLROOM	377	29	13	7	280	180	120	100	250	400
BALLROOM 1	150	11.5	13	7	90	60	56	42	100	150
BALLROOM 2	227	17.5	13	7	160	100	64	50	160	250
THE BOX	45	9	5	2.5	30	25	24	20	20	30
SOCIAL ROOM 1	75	11.5	6.5	3	80	55	40	25	80	60
SOCIAL ROOM 2	32	8	4	3	30	12	20	-	20	-
SOCIAL ROOM 3	56	8	7	3	50	34	18	20	40	30
SOCIAL ROOM 4	29	6.5	4.5	3	-	-	20	-	-	-
SOLUTION CENTRE	24	5.9	4	3	-	-	8	-	-	-
SOCIAL CLUB + BALLROOM	-	-	-	-	500	300	200	150	400	600

CATEGORY	ROOM CONFIGURATION				ELEMENT				
	SIZE (M ²)	SIZE (FT ²)	ROOMS	TWIN	KING	METAL	WOOD	EARTH	WATER
So COSY	38	409	88	17	71	YES	YES	YES	-
So COMFY	38-45	409-484	102	31	71	YES	YES	YES	YES
So CLUB	40-51	430-549	20	-	20	YES	YES	YES	YES
So STUDIO	64-74	645-797	11	-	11	YES	YES	YES	-
So SUITE SPA	67-89	721-958	3	-	3	-	YES	-	-
So SUITE	75-94	807-1,012	5	-	5	-	-	YES	YES
So LOFTY	95-120	1,023-1,292	8	-	8	YES	YES	-	YES
So VIP (DUPLEX)	233	1,485	1	-	1	-	-	-	YES
	TOTAL		238	48	190				

S O F I T E L
LUXURY HOTELS

Sofitel So Bangkok

2 North Sathorn Road, Bangrak, Bangkok 10500 Thailand

Tel: +66 2624 0000 E-Mail: H6835@sofitel.com

Sofitel reservation service: France 0825 88 55 55

Australia 1 300 753 483 / 1 300 SOFITEL - China 400 813 33 88

www.sofitel.com